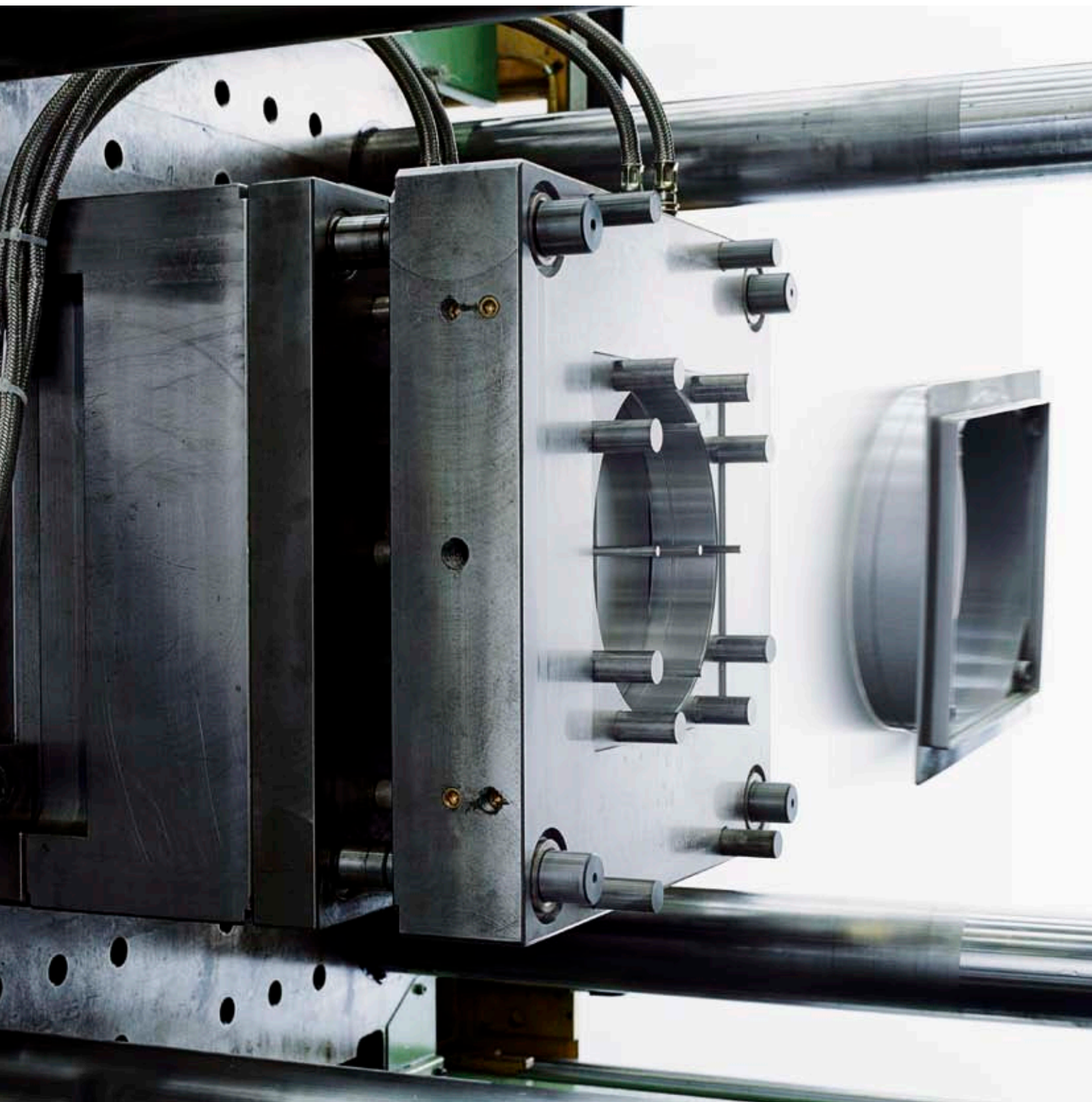


Viega Drainage Technology for Bathroom and Floor.



viega



Viega. A better idea!

Some things last. Even more than 110 years later.

At Viega, innovation and entrepreneurial vision are now more alive than ever before – these success factors date back to the company founders. Today, the Viega Group employs more than 3,500 staff worldwide. Viega is working to continue its long-term success at nine locations. While production is concentrated at its four main sites in Germany, the McPherson/USA group manufactures solutions specially designed for the North American market. And the Wuxi/China site focuses on production for the Asian market. The company specialises in installation technology – the constant driver of growth.

Viega has a worldwide reputation for innovations that set standards.

Take for example press connection technology, the innovative solution for copper pipe systems. Or the introduction of the SC-Contur for visible inspection reliability in every press connector. With Viega, safety is not just guaranteed upon installation. Viega also offers intelligent solutions for the global challenge of operating hygienic drinking water systems.

“Quality made in Germany” is taken seriously at Viega.

Computer-controlled, automated production delivers absolutely reliable results. Each production process is monitored by up to five quality checks that guarantee maximum safety. The result: over 17,000 products for almost every type of application. The equation of quality and flexibility impresses planners, architects, installers specialists and builders around the world. Be it residential apartments, hotels, hospitals, sports areas or production plants – Viega systems are proven for all buildings and applications.



Viega Drainage Technology: Great Outlooks for Bathroom and Floor.



Contents

Viega drainage technology for the bathroom and floor represents one of the company's core areas of competence. It is based on the connection of well thought out solutions in function, comfort and design.



Drainage technology for bathtub fittings

Inlet, outlet and overflow fittings, also with electronic water inflow from the bathroom floor, as well as simple control at the press of a button.

Page **6**



Drainage technology for shower tray drains

The shower drain technology for extremely high drainage capacity and various installation conditions.

Page **16**



Drainage technology for washbasins and washing machines

Odour traps for bathrooms, kitchens and cellars.

Page **20**



Special solutions for washbasins

Space-saving odour traps, drains and overflows for washbasins and more space underneath.

Page **26**



Advantix bathroom and floor drainage

Assembly recommendations for simple, practical installation. Application examples and design possibilities for use in new buildings and refurbishments.

Page **28**



Drainage Technology for Bathtubs: New Dimensions in Comfort.

Modern bathrooms have long since been more than purely functional rooms – increasingly, they are becoming private oases of well-being. Waterfall showers and whirlpools, an increasing demand for design and superior comfort during use are bringing the subject of well-being in the bathroom increasingly into focus. Viega is satisfying this trend with innovative solutions for bathtub filling and introducing electronic controls into the bathroom.

With the Multiplex Trio E3, E2 and E mixing units, the water volume and temperature can be saved and then called up easily at any time. The Multiplex Trio E3 fitting also has a display, which directly shows the specifics of water temperature and volume. Operation is also being simplified and individual settings can be easily saved. The attractive design fits seamlessly into modern bathrooms and satisfies the highest demands.





M5/MT5



M4/MT4



M3/MT3



M2/MT2



M1/MT1



DESIGN PLUS

powered by: **ISH**



reddot design award
winner 2011



Drainage Technology for Bathtubs: Electronic Mixer Units Multiplex Trio E3, E2, E.



Fully-automated bathtub filling

The multi-functional operating elements of the Multiplex Trio E fittings (MT E) regulate and save the water temperature, volume and filling level. The settings can be accessed at any time – there's no need to watch the bath filling up. In addition, the electrical valve cone of the optional Viega drainage and overflow fittings can be opened and closed using the MT E controls. In addition, the fittings can be remotely controlled via an Apple end device using the Mulpex Trio E-App (Fig 2).

Multiplex Trio E3: with display and control element (Fig. 1)

The display element makes it intuitive to operate. It shows the individual default settings, water temperature and water inlet volume and a user menu is displayed when you press lightly, allowing you to select all further functions to do with filling the bath.

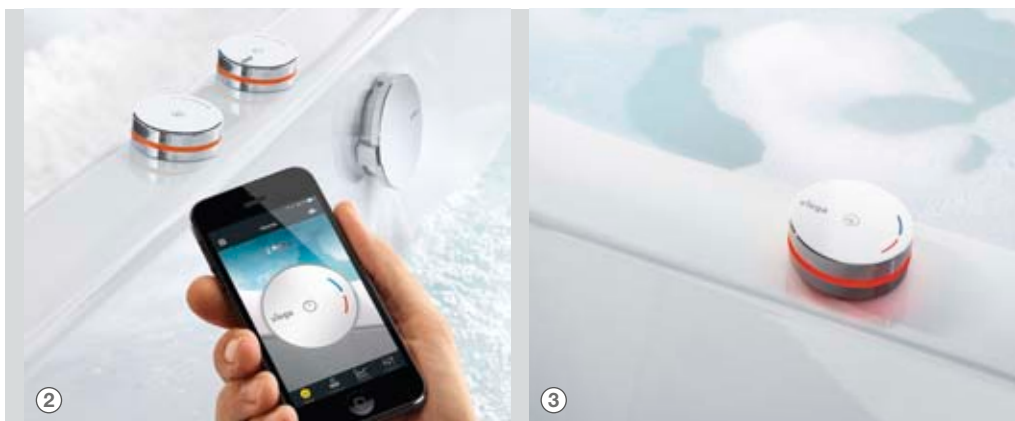
The temperature selection and On/Off function are combined into one chrome-plated control element.

Multiplex Trio E2: with two control elements (Fig. 2)

The bath is filled using two control elements. One controls the On/Off function and water temperature. Another regulates the water inlet volume and the switchover to the adjustable shower head.

Multiplex Trio E: with all functions in one control element (Fig. 3)

One button for everything: All functions can be called up using one control element.



Multiplex Trio E3 control elements

The rotatable display element with a glass surface and the element made completely of chrome ensure intuitive handling. That makes Multiplex Trio E3 especially attractive for use in semi-public buildings (hotels or medical uses).



Multiplex Trio E2 control elements

A clear separation of the functions in two control elements, but optically identical: The Multiplex Trio E2 stands for clarity in control and function.



Multiplex Trio E control element

Everything concentrates itself reservedly on one central control element. Information about the water temperature and the flow volume can be seen on the lighting.

Multiplex Trio E Fittings:
The best shape and material for ease of use.

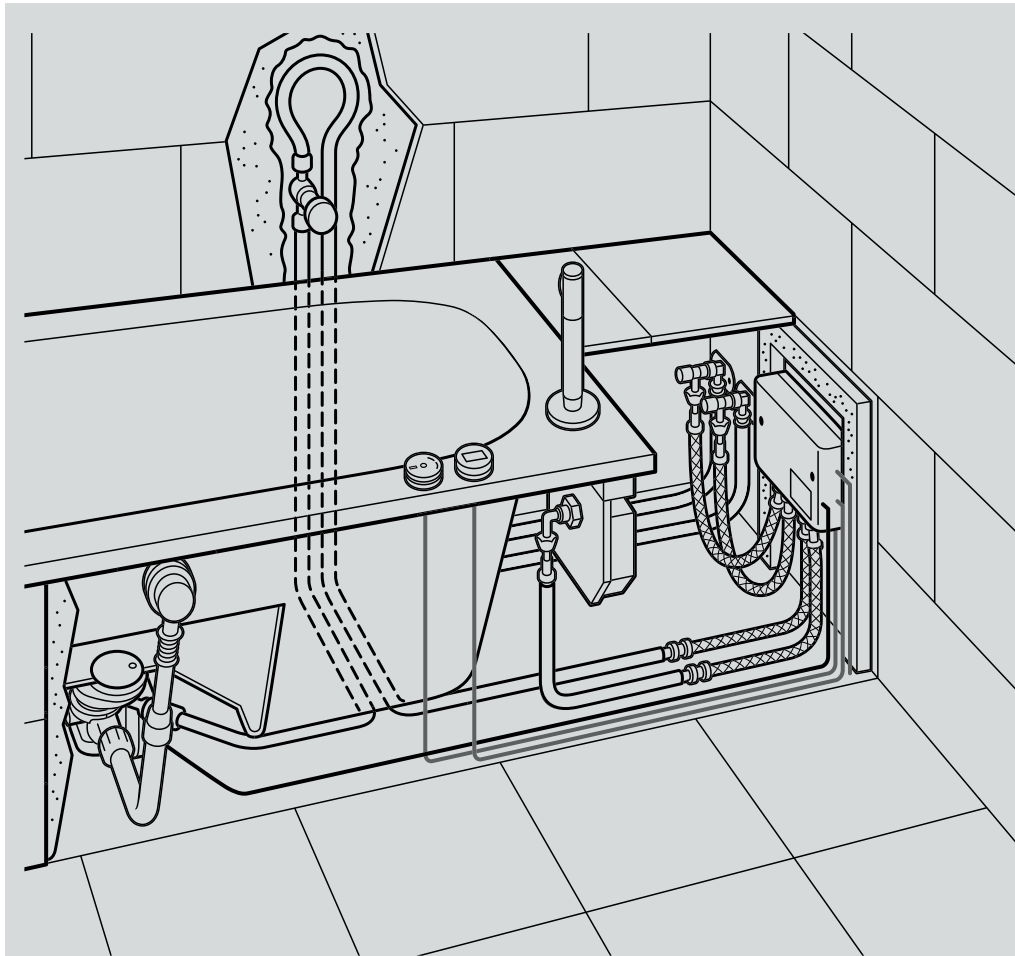




Easy assembly, great design freedom

The control elements of the Multiplex Trio E series can be quickly and easily fitted and connected wherever you want. Whether on the tub rim, in its own podium or on the wall – you can use these immediately after connecting to the water and electricity supplies. An assembly kit is also available for fitting outside the bathtub, consisting of a built-in box, fastening materials, a sealing cuff and chrome-plated cover plate.

The three product versions of the Multiplex Trio E series can be combined with all drainage and overflow fittings of the Multiplex and Rotaplex series. The combination of the drain fittings with an electrical valve cone drive offers a particular advantage here. In this case, the valve cone can be controlled using the control elements. All the technical components can be placed out of sight and wherever you want. An inspection opening means they are easily accessible.



Installation on the tub rim

The technical components of the Multiplex Trio E fittings can be positioned freely, meaning you can install them out of sight. The inspection opening means they can be accessed easily at any time for maintenance. With fitting a drainage and overflow fitting with electrical valve cone drive, this can also be controlled with the Multiplex Trio E control elements.

Multiplex Trio E mixer unit

For flexible assembly, even in tighter installation situations.



Drainage Technology for Bathtubs: Filling from the Tub Rim.





The classic among the Viega inlet, drainage and overflow fittings for MT1, MT2, RT1 and RT2.



Modern design, combined with a flat structure in the tub – the inlet, drainage and overflow fitting for MT3, MT4, RT3 and RT4.

Multiplex Trio for 52 mm drain holes

Available in countless designs and suitable for drain holes with a 52 mm diameter, the Multiplex Trio exceeds standards when it comes to its drainage capacity. It is also impressive with its flat structure and award-winning design.

Rotaplex Trio for 90 mm drain holes

The Rotaplex Trio for drain holes with a 90 mm diameter are always used when high drainage capacities are required. There are two models to choose from for various tub sizes. These can be combined with all Viega designs.



When space is tight! An extremely flat structure in and behind the tub – the inlet, drainage and overflow fitting for MT5 and RT5.

Multiplex Trio Visign MT5 and Rotaplex Trio Visign RT5

Thanks to an installation depth of just 33 mm, these are particularly suitable for narrow tub edges. Also available as Multiplex Visign M5 and Rotaplex Visign R5 drainage and overflow fittings.



Multiplex Trio MT5

Inlet, drainage and overflow fitting for bathtubs with 52 mm drain hole as a flat design model with an installation depth of just 33 mm for particularly flat tub rims.



Rotaplex Trio MT5

Inlet, drainage and overflow fitting for bathtubs with 90 mm drain hole as a flat design model with an installation depth of just 33 mm for particularly flat tub rims.



Multiplex Trio MT5 with electronic valve cone drive (connection to MT E-technology)

Inlet, drainage and overflow fitting for bathtubs with 52 mm drain hole as a flat design model with an installation depth of just 33 mm for particularly flat tub rims.



Rotaplex Trio RT5 with electronic valve cone drive (connection to MT E-technology)

Inlet, drainage and overflow fitting for bathtubs with 90 mm drain hole as a flat design model with an installation depth of just 33 mm for particularly flat tub rims.



Pipe interrupterr.

For the connection of Multiplex Trio and Rotaplex Trio fittings.

Multiplex Trio and Rotaplex Trio

Drainage capacity

at 300 mm accumulation height	
Multiplex Trio	0.87 l/s
Rotaplex Trio	1.25 l/s

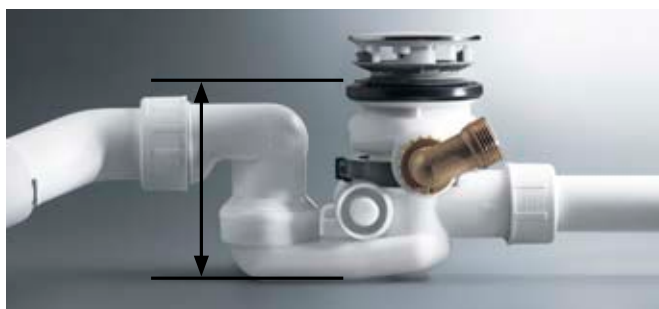
Overflow capacity

at 60 mm accumulation height above the middle overflow hole	0.63 l/s
---	----------

Inlet capacity

at 2.5 bar 20 l/min

Drainage Technology for Bathtubs: Filling from the Floor.



Multiplex Trio F and Rotaplex Trio F

The new way to fill bathtubs is virtually soundless from the bottom up. The water is drawn through the floor drain in a radial form – the noise level, in comparison to standard fittings, is halved. Thanks to the different heights, the inlet and drain are clearly separated from one another and a backflow safety device and DVGW-certified concealed pipe interrupter prevent the wastewater from entering the drinking water system.



**Multiplex Trio F
for filling from the bottom up**
Inlet, drainage and overflow
fitting for all types of bathtub
with 52 mm drain hole.



**Rotaplex Trio F
for filling from the bottom up**
Inlet, drainage and overflow
fitting for all types of bathtub
with 90 mm drain hole.



**Multiplex Trio F
for filling from the bathtub
bottom up with electronic valve
cone drive
(connection to MT E-technology)**
Inlet, drainage and overflow fitting
for bathtubs with 52 mm drain hole
flat overflow with an installation
depth of just 33 mm for particularly
flat tub rims.



**Rotaplex Trio F
for filling from the bathtub
bottom up with electronic valve
cone drive
(connection to MT E-technology)**
Inlet, drainage and overflow fitting
for bathtubs with 90 mm drain hole
flat drain hole with an installation
depth of just 33 mm for particularly
flat tub rims.

Multiplex Trio F and Rotaplex Trio F

Drainage capacity

at 300 mm accumulation height
Multiplex Trio F 0.85 l/s
Rotaplex Trio F 1.0 l/s

Overflow capacity

at 60 mm accumulation
height above the middle
hole 0.63 l/s

Inlet capacity at 2.5 bar 20 l/min

Drainage Technology for Bathtubs: Outlets and Overflows.



Multiplex for 52 mm drain holes

The tried-and-tested design without a water inlet function offers a particularly low installation height and is suitable for drain holes with a diameter of 52 mm. Multiplex systems, which have already been installed, can be retrofitted with the award-winning Visign M1, M2, M3, M4 and M5 ranges.



Structure of the drainage and overflow fitting for M1, M2, M3, M4 and M5

Rotaplex for 90 mm drain holes

Designed for larger drainage capacities, the Rotaplex floor drain is suitable for drain holes with a diameter of 90 mm. Thanks to various designs and two different versions, it is suitable for any taste and any bathtub form.



Multiplex M5

Drainage and overflow fitting for bathtubs with 52 mm drain hole as a flat design model with an installation depth of just 33 mm for particularly flat tub rims.



Rotaplex R5

Drainage and overflow fitting for bathtubs with 90 mm drain hole as a flat design model with an installation depth of just 33 mm for particularly flat tub rims.

Multiplex and Rotaplex		
Drainage capacity		
at 300 mm accumulation height		
Multiplex		0.87 l/s
Rotaplex		1.25 l/s
Overflow capacity		
at 60 mm accumulation height above the middle hole		
		0.63 l/s

Drainage Technology for Shower Trays: Accomplished Design, Perfect Technology.

More and more customers want water-fall showers and XXL showerheads, for which extreme amounts of water are typical. At the same time, they prefer particularly flat shower trays, which can only hold small amounts of water. With Tempoplex, Viega offers high-quality, well-designed shower tray drains, and whose drainage capacity is up to 100% above the norm. The attractive covers of the drains can simply be pressed on and guarantee secure positioning, thanks to the 3-point anchorage.





Tempoplex



Drainage Technology for Flat Shower Trays.



Tempoplex

With an installation height of just 80 mm and a drainage capacity, which considerably exceeds the standard, the Tempoplex drain fitting is perfect for flat shower trays with a drain hole of 90 mm. A dual drainage seal and the robust stainless steel flange provide additional security. All models have a removable, easy-clean odour trap.

Tempoplex Plus

Also designed for flat shower trays with a 90 mm drain hole, the Tempoplex Plus has a particularly aerodynamic internal structure. This means the drainage capacity is more than 100% above the standard. A dual seal and ball joint make assembly efficient.

Tempoplex 60 for renovations

With an installation height of just 60 mm, Tempoplex 60 is perfect for renovations. Despite the narrow dimensions, the drain fitting has a water seal head of 30 mm and provides a considerable drainage capacity.

Tempoplex
Drain fitting for flat shower trays with 90 mm drain hole.

Tempoplex
Vertical drain fitting for flat shower trays with 90 mm drain hole.

Tempoplex Plus
Drain fitting for flat shower trays with 90 mm drain hole and ball joint drain supports.

Tempoplex 60
Drain fitting for flat shower trays with 90 mm drain hole, installation height 60 mm.

Cleaning plugs
Simple cleaning via easily removable cleaning plugs.

Fitting	Drainage capacity at 15 mm accumulation height
Tempoplex	0.64 l/s
Tempoplex Plus	0.85 l/s
Tempoplex 60	0.5 l/s

Drainage Technology for Deep Shower Trays.



Domoplex
The Domoplex drain fitting is suitable for shower trays with drain holes of either 52 or 65 mm. The low installation height of 80 mm means assembly is quick, without reducing the drainage capacity. The easy-clean odour trap and dual drainage seal provide additional security. Domoplex is available with a vertical drain and with a 45° drainage arch – both designs are available with a diameter of 40 or 50 mm.

Duoplex
With the removable stand pipe of the drain fitting, water of up to 90 mm high can be collected in the shower tray. If the pipe is then removed, the water drains normally.

Varioplex
For 30 years, the Varioplex drain fitting has stood for quality and cost-effectiveness. The water can be collected with a separate stand pipe, while a 360° odour trap makes assembly easier.



Domoplex
Drain fitting for shower trays.



Duoplex
Drain fitting for shower trays with 52 mm drain hole with removable stand pipe.



Varioplex
Drain fitting for shower trays with 52 mm drain hole, stand pipe.

Fitting	Drainage capacity at 120 mm accumulation height
Domoplex	0.53 l/s
Duoplex	0.65 l/s
Varioplex	0.53 l/s

Drainage Technology for Washbasins and Washing Machines: No Need to be Concealed.



Whether it's the beautifully shaped odour traps of the Eleganta range, the well thought out Visign drain valves or the odour traps for washbasins and washing machines – their design makes them into real eye-catchers. However, as is always the case with Viega fittings, they not only distinguish themselves by their accomplished design, but also through their excellent technical characteristics.



Eleganta Set



Drainage Technology for Washbasins: Drain Valves.

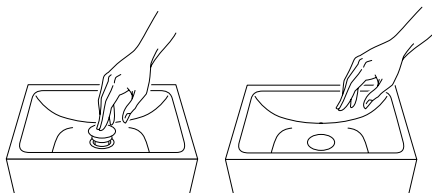


Universal and shaft valves

With or without an overflow function – Viega drain valves can be used as universal or shaft models.

Amazing click technology

Viega universal and shaft valves are either unsealed or come with the practical click technology for water accumulation. By lightly pressing, these valves can be opened and closed. More evidence that Viega understands just as much about modern technology as it does contemporary design.



Visign V1 slotted valve

Brass, chrome-plated with overflow function. With non-lockable cap or lockable via a round click-on closure cap.



Visign V1 universal valve

Brass, chrome-plated. With round, non-lockable cap or lockable via round click-on closure cap.



Visign V1 slotted valve

Brass, chrome-plated, with overflow function. Lockable via a round click-on closure cap.



Visign V1 universal valve

Brass, chrome-plated. With lockable cap or lockable via an immersible click lock.



Universal valve

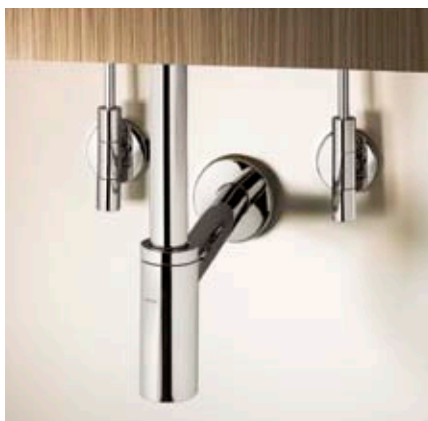
With sieve and stainless steel screw.



Universal valve

With upper valve section and stainless steel screw, with valve plug.

Drainage Technology for Washbasins: Odour Traps.



For a round drain

Viega offers you the ideal siphon for your requirements to match your bathroom. Whether it is made of plastic or highgloss chrome brass in bottle or pipe form, the siphons are inspiring with their efficient design and integrated odour trap. In addition, they are resistant to all household cleaners. For washbasins without overflow drains, Viega offers you a siphon with removable stand pipe. This means a variable water level of 0–90 mm can be achieved.

Exclusive design under the washbasin

The Eleganta washbasin odour trap from Viega is an optical highlight in any bathroom. The design's streamlined form is impressive.

Conical seal

The odour traps have a conical seal, which is centred and pressed under the valve during assembly. This prevents the seal from moving.



Eleganta

Made of brass, with high-gloss chrome plating, long adjustable pipe and drainage pipe, large cover plate to connect to the wall.



Eleganta Set

Made of brass, with high-gloss chrome plating, long adjustable pipe and drainage pipe, large cover plate to connect to the wall, corner control valve.



Bottle odour trap

Made of brass, chrome-plated.



Pipe odour trap

Made of brass, chrome-plated.



Odour trap

Completely chrome-plated, for washbasins without an overflow hole, with a 90 mm removable standpipe.



Pipe odour trap

For bidets, chrome-plated.

Drainage Technology for Washbasins: Odour Traps.



Tried-and-tested a million times

There are many reasons for the huge success of Viega odour traps. Their high drainage capacity is above the norm. Their effective internal workings allow for outstanding self-cleaning. And: the drainage elbow of the trap is screwed directly onto the drain valve without the need for an additional adjusting pipe, which saves space.

Material and variations

The Viega odour traps are made of highquality, environmentally-compatible polypropylene. It is resistant to waste water and to all normal household cleaners which makes Viega odour traps especially durable. Internally, the material also provides smooth surfaces. Viega odour traps are available as concealed.

Height-adjustable

Viega odour traps are perfectly thought out. They are easy to fit, space-saving and offer a particularly intelligent function: They can be adjusted by 50 mm in height during final installation.



Concealed odour trap

Adjustable by up to 50 mm, barrier-free and allow a wheelchair to fit below them. No additional adjustable pipe in the way, the space available under the washbasin increases noticeably. The odour trap is removable, the corresponding cover plate (195 x 110 mm) can either be ordered in the finishes chrome-plated or white. The chrome-plated version has a conical seal, which is pushed centrally below the valve during assembly and therefore prevents displacement of the seal.



Pre-wall odour trap

Adjustable by 50 mm, suitable for the new, compacter shapes of half-column ceramic. In combination with furniture washbasins, it creates additional storage space. Even this solution does not require any additional adjustable pipe.



Height adjustable by 50 mm at the end installation.



Compact forms, combined with various furniture washbasins and half-columns.



Odour trap with integrated water inlet

To drain washing machines, Viega offers concealed traps with integrated water inlet. As an alternative, these can be fitted behind the device in an easily accessible place for optical reasons. The backflow preventer and pipe ventilator are part of the shut-off valve fittings. Both are also integrated into the connecting elbow.

Odour trap without water inlet

If the trap is installed as a concealed model, then only the rosette and angled hose fitting are visible. In addition, there is the space-saving option of visible assembly. The odour trap can be installed particularly quickly and easily with the joining material provided with the fitting.



Odour traps with integrated water inlet



Odour traps without water inlet

Drainage Technology for Washbasins: More Space for Everyday Life.





Viega “space-saver”

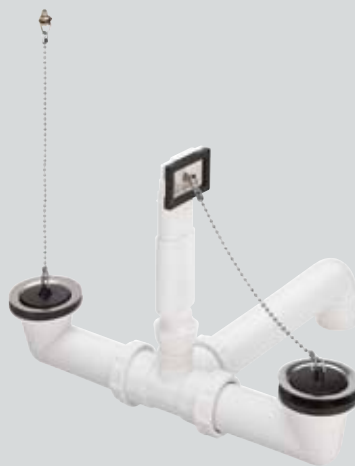
The space-saving Viega drainage and overflow fittings, irrespective of whether they have an odour trap or not, create space underneath the sink. This means more space for bins, cleaning agents and detergents. The reliable and easy-to-fit connecting technology can be quickly and cleanly installed without any tools. The material is resistant to all household wastewater and cleaning agents and the smooth internal surface ensures aerodynamic and safe drainage. It is no problem to convert an existing sink drain to a space-saving Viega space-saver.



Space-making pipe odour trap
For sinks, with wastewater pipe connection, made of plastic.



Space-making drain/overflow
For reversible single sinks made of plastic, with 90° drains, valve top made of stainless steel, valve plug with bead chain.



Space-making drain/overflow
For reversible single sinks made of plastic, with 90° drains, valve top made of stainless steel, valve stopper with bead chain or ring.

Advantix Bathroom and Floor Drainage: Design Follows Function.

Even in the area of bathroom and floor drainage, Viega sets standards with its Advantix modular drainage solutions. The most varied base units, seals, add-on elements and grates can be freely combined to fit in with the corresponding application. Whilst they master their role in secret, the Visign grates for shower channels, bathroom, floor and corner drains set the scene with optically attractive accents – multiple awardwinning such as Viega Advantix Vario, the first shower channel that can be cut to size.





Advantix Vario panel
Stainless steel – polished



Advantix Vario panel
Stainless steel – matt



Advantix Vario panel
Stainless steel – black



Advantix Vario panel
Stainless steel – white



Viega Advantix Vario:
Significant – in Design, Quality and Individuality.





The Viega Advantix Vario shower channel made of high-quality plastic can be individually adapted in terms of length and fits seamlessly into the modern bathroom. Straight designs can be realised with a length of up to 280 cm, U-form and corner designs are possible with a length of up to 160 cm. From a length of 80 cm, an additional channel can be installed with the help of a second shower channel, doubling the drainage capacity. This means the Advantix Vario shower channel satisfies both customer requirements and any structural demands.



Advantix Vario connector
To connect two shower channels.



Advantix Vario end connector
To extend.



Advantix Vario 90° connector
To connect two shower channels.



Advantix Vario metal grating set
Suitable for Advantix Vario end connector and Advantix Vario 90° connector.

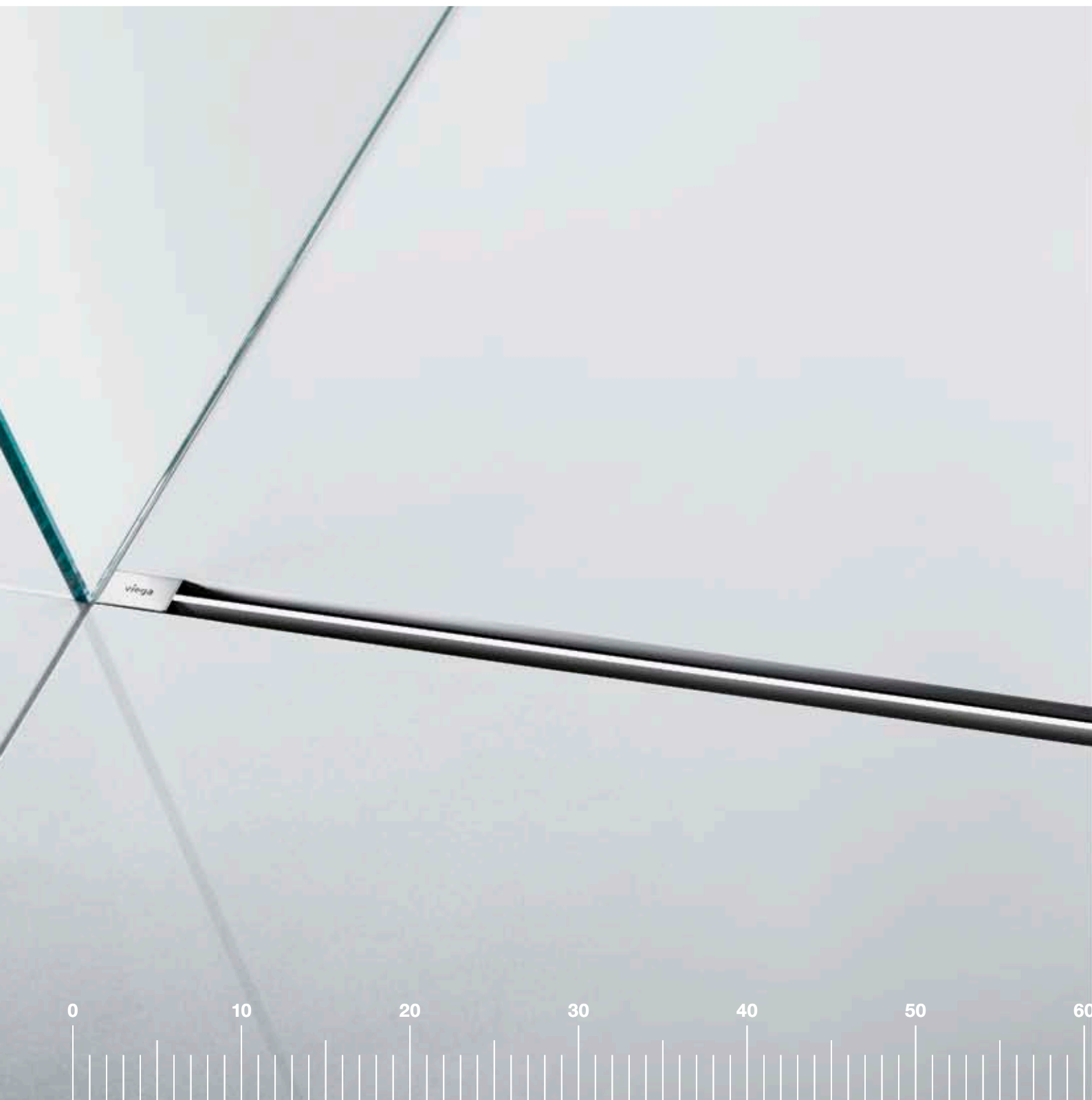


Advantix Vario accessories kit
Suitable for Advantix Vario 90° connector.



Advantix Vario accessories kit
Suitable for Advantix Vario connector, Advantix Vario end connector and Advantix Vario 90° connector.

New! Advantix Vario: The First Tailor-Made Shower Channel.

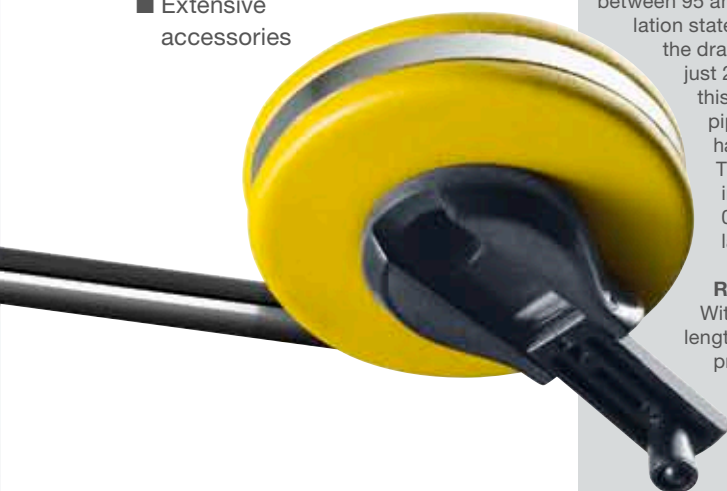


A success story – that's the long and short of it

Viega Advantix Vario is the first shower channel which can be shortened exactly to the required length. Whether installed directly on the wall or free-standing in the room, whether straight, corner or U-shape – the Advantix Vario shower channel makes it easy to design your bathroom individually, while satisfying all the structural demands.

The advantages at a glance:

- Prize-winning design
- Attractive colours
- Limitless design options
- Permits all channel lengths from 30 to 280 cm
- Quick and simple assembly
- Variable installation height
- Secure sealing concept
- Height-adjustable grate
- Self-cleaning drain
- Drainage capacity of up to 2.4 l/s
- Extensive accessories



Simple, quick assembly (Fig. 1)

Step 1: Shorten the channel base unit using a hacksaw and a saw guide, deburr the cut edges, attach the protective caps and screw on. Step 2: Determine the construction height, shorten the height-adjustment piece and mount the drain set and support feet. Step 3: Align the shower channel, connect to the drain pipe and fasten the feet. Finished.

Secure sealing concept (Fig. 2)

A durable and practicable seal is the most important feature of a floor-level shower. All of the materials required such as special adhesive and sealing strip are included in the scope of delivery.

Height-adjustable grate (Fig. 3)

Using an adjustable bridge bracket, the grate height can be adjusted to tile heights of 5 to 20 mm. For thicker floor coverings (e.g. natural stone), Viega offers an accessories kit, with which the metal grate can be adjusted to between 15 and 30 mm.

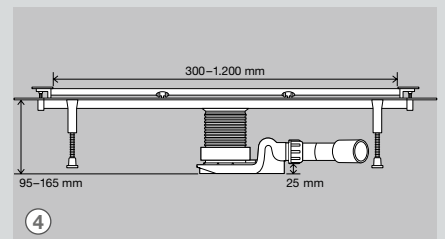
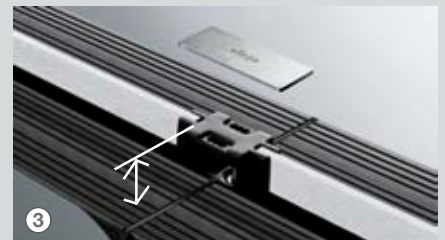
For corner, U and long designs, there are additional connectors available. The connections to the channel are sealed with a special sealant, which guarantees a secure connection.

Variable installation height (Fig. 4)

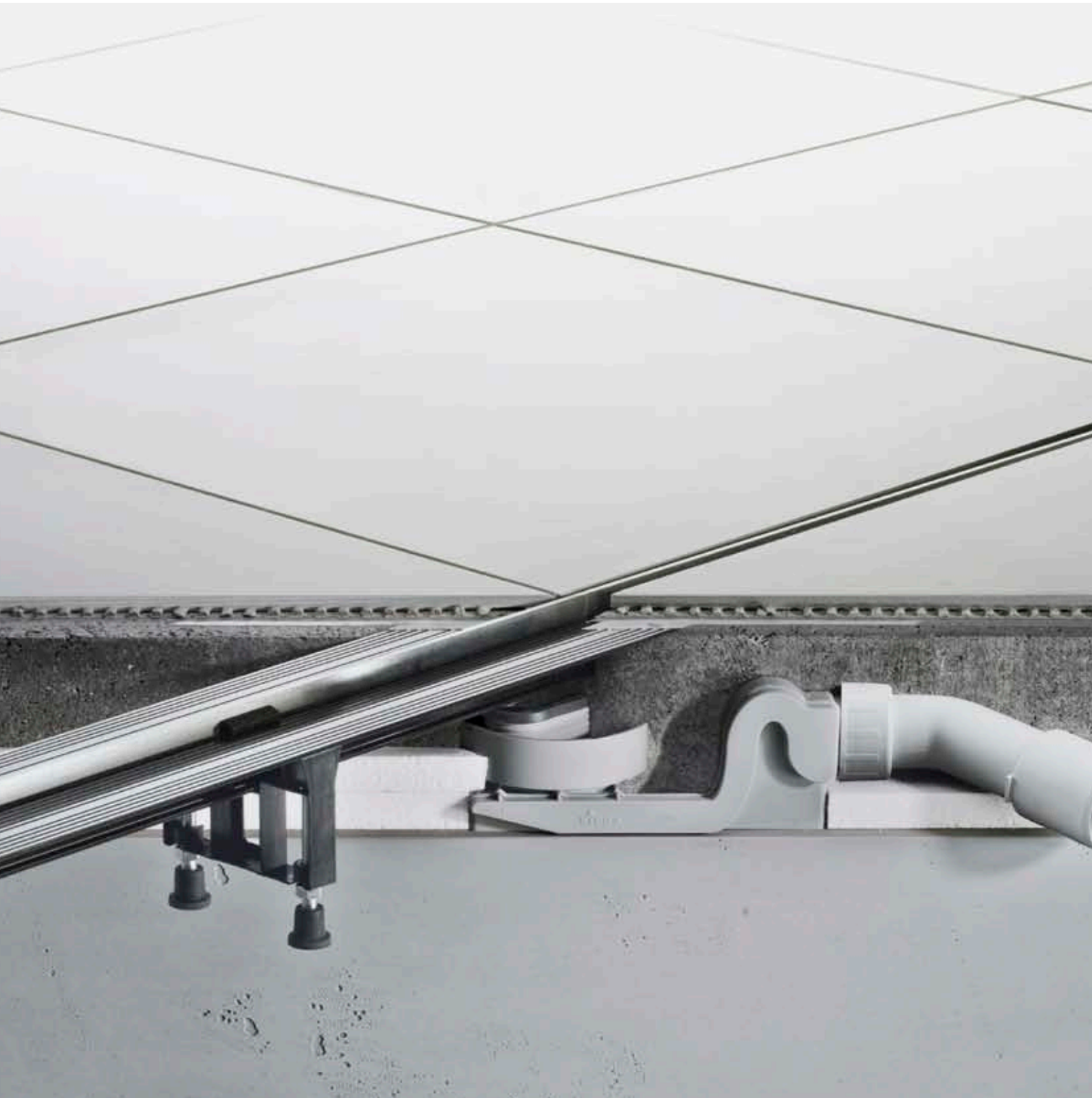
The installation height of the Advantix Vario is between 95 and 165 mm. In its flattest installation state, the height difference between the drain support and foundation is just 25 mm. For standard inclines, this means 250 cm of connecting pipes can be installed without having to raise the shower channel. The drainage capacity for each individual channel drain is 0.4 to 0.8 l/s depending on the installation height.

Reduced inventory (Fig. 5)

With an Advantix Vario, the right length is always in stock. Special productions are passé. Just a base plate and two grate designs for all solutions noticeably optimises logistics. The universal channel does not require much room. Your warehouse will have considerably more space.



Advantix Vario Shower Channel: Bonded Sealing Technology.



Composite sealing and its advantages

Since the protection of the structure from moisture penetration is the topmost priority, bonded sealing technology is used increasingly for floor-level showers. The advantages: the seal between the floor screed and tiles prevents the floor screed from being penetrated by moisture. The use of bonded sealing technology saves any additional seals through bitumen or plastic channels.

Sealing concept with all accessories included

So that the seal remains leak-proof in the long-term and can be applied practically by the tiler, the box contents include the Advantix Vario special adhesive, sealant strip and hard foam block in a tiler set. After removing the site protection foil from the channel flange, the adhesive is applied using a special trowel. The sealing strip is worked into the special adhesive or the bonded sealant. With this the crossover area between the channel and the screed is securely connected. The second layer of liquid foil completes the sealing process. After tiling, the hard foam block can be removed and the designer grate can be inserted.

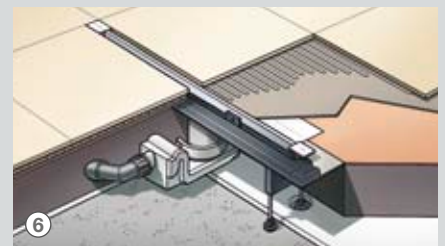


Assembly in the open room: shower channel Advantix Vario

1 Measuring the required length and placing of the saw guide in the appropriate position on the channel basic unit.

2 Shortening of the channel basic unit using a hacksaw and the saw guide.

3 After deburring the cut edges, apply lubrication to the flange area of the shower channel, place the caps onto the channel and screw tight.



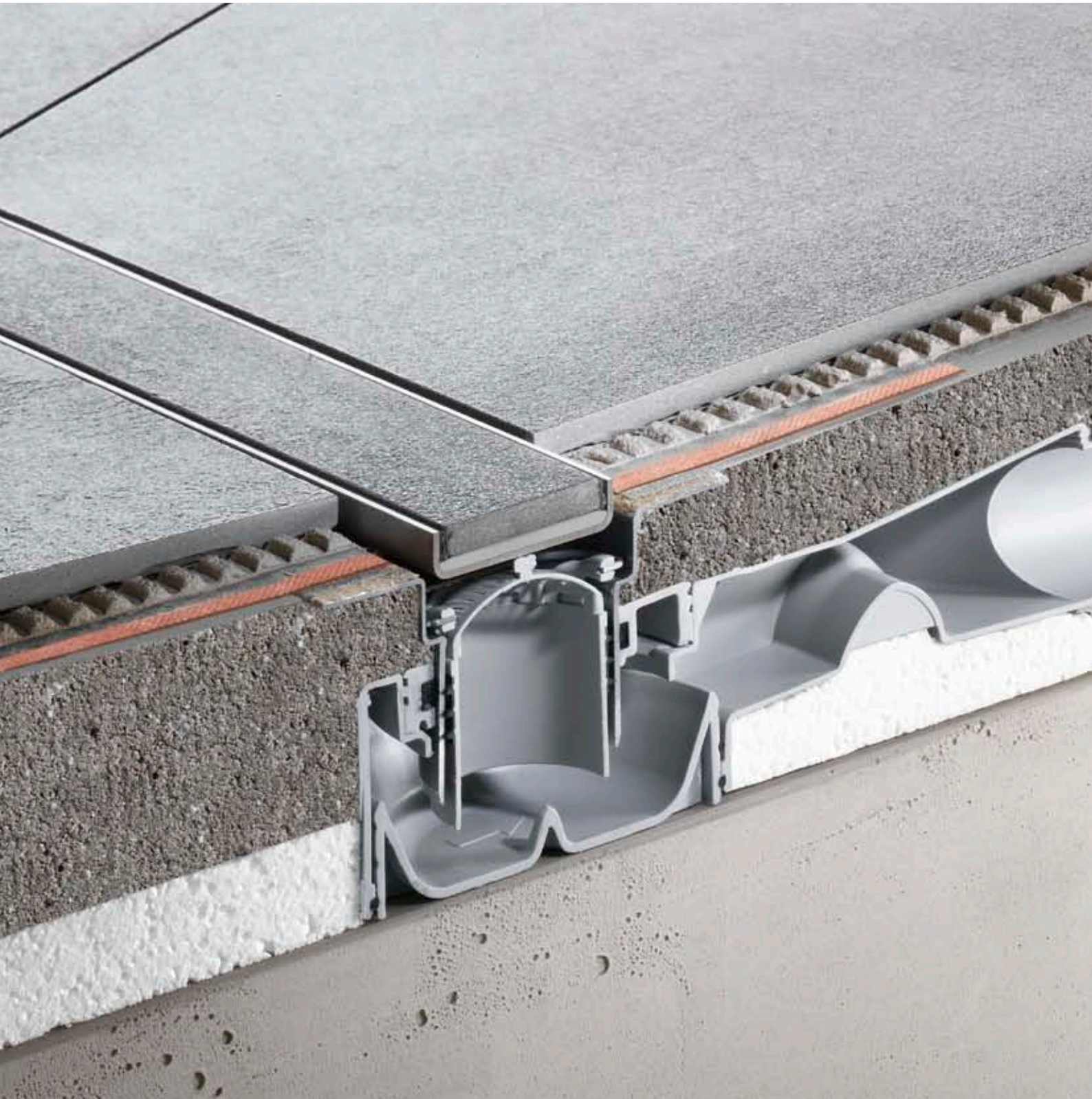
4 Determination of the construction height and shortening of the height-adjustment piece as well as the assembly of the drain set and support feet. Then adjust the shower channel using the adjustable feet. Affix the protective cover sticker.

5 Application of the adhesive and sealing strip, working-in of the sealing strip into the liquid seal.

6 The perfect result: The height-adjustable standing grate, which is only 4 mm wide, integrates harmoniously into a tile gap that is only 20 mm wide.



**Advantix Shower Channel with Advantix Top
for especially large Drainage Capacities.**



Top in all categories

The trend towards floor-level showers in connection with constantly lower floor heights has led to the demand for floor drains with the features “more drainage capacity, flatter, more secure”. Altogether characteristics that were previously difficult to combine. Viega now offers the suitable solution: Advantix Top!

High drainage capacity

Shower channels with Advantix Top reach a very high drainage capacity thanks to an optimisation of flow resistance as well as a generous construction shape.

Variable due to height-adjustable floor

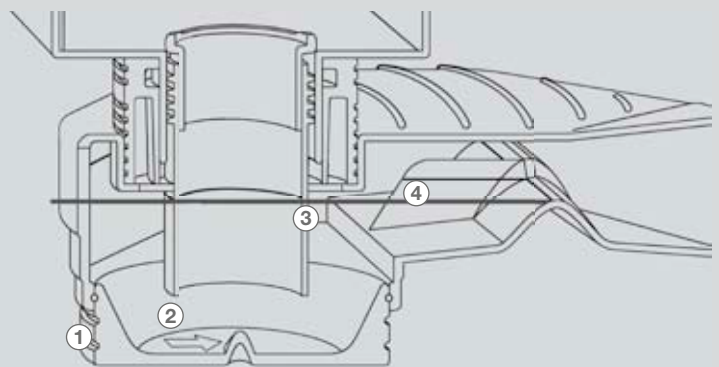
The Advantix shower channels can be adjusted on site to fit in with any floor height above 90 mm. By shortening or selection of the immersion pipe, depending on the model, the water seal head is adapted to the construction height with 35, 40 or 50 mm.

Backflow secure

In the case of underpressure in the piping system, a functional principle developed in-house ensures that the water seal in the drain is sufficient, thus protecting against annoying odours. This is even possible with a water seal height of 35 mm in flat floor construction! Therefore, even with such a minimal water seal height, the requirements of DIN EN 1253 are fulfilled.

Simple cleaning

To clean the drain casing, one only needs to remove the immersion pipe. Even the extended connection pipe can be cleaned using a coil.



Flat actual construction height, 2 m slope included

To enable the installation height to be kept as low as possible, the drain supports have been placed at the upper edge of the drain unit. Even in the flattest installation situation, the height difference to the rough concrete of the floor is still 20 mm. Therefore a pipe up to two metres long can be installed without having to raise the drain.

1 Adjustable installation and water seal height via treble height adaption of the floor part. Depending on the installation height, the drainage capacity is up to 1.0 l/s for shower channels and up to 1.2 l/s for point drains.

2 Arrow markings on the drain floor for simple determination of the draining direction when cleaning.

3 By shortening the immersion pipe, a high drainage capacity is realised at the maximum water seal height.

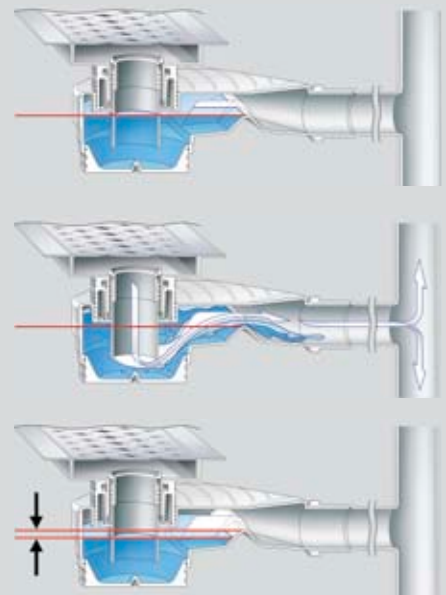
4 Backflow secure due to water seal barrier with central throughflow opening and lateral retaining pockets.

The functional principle

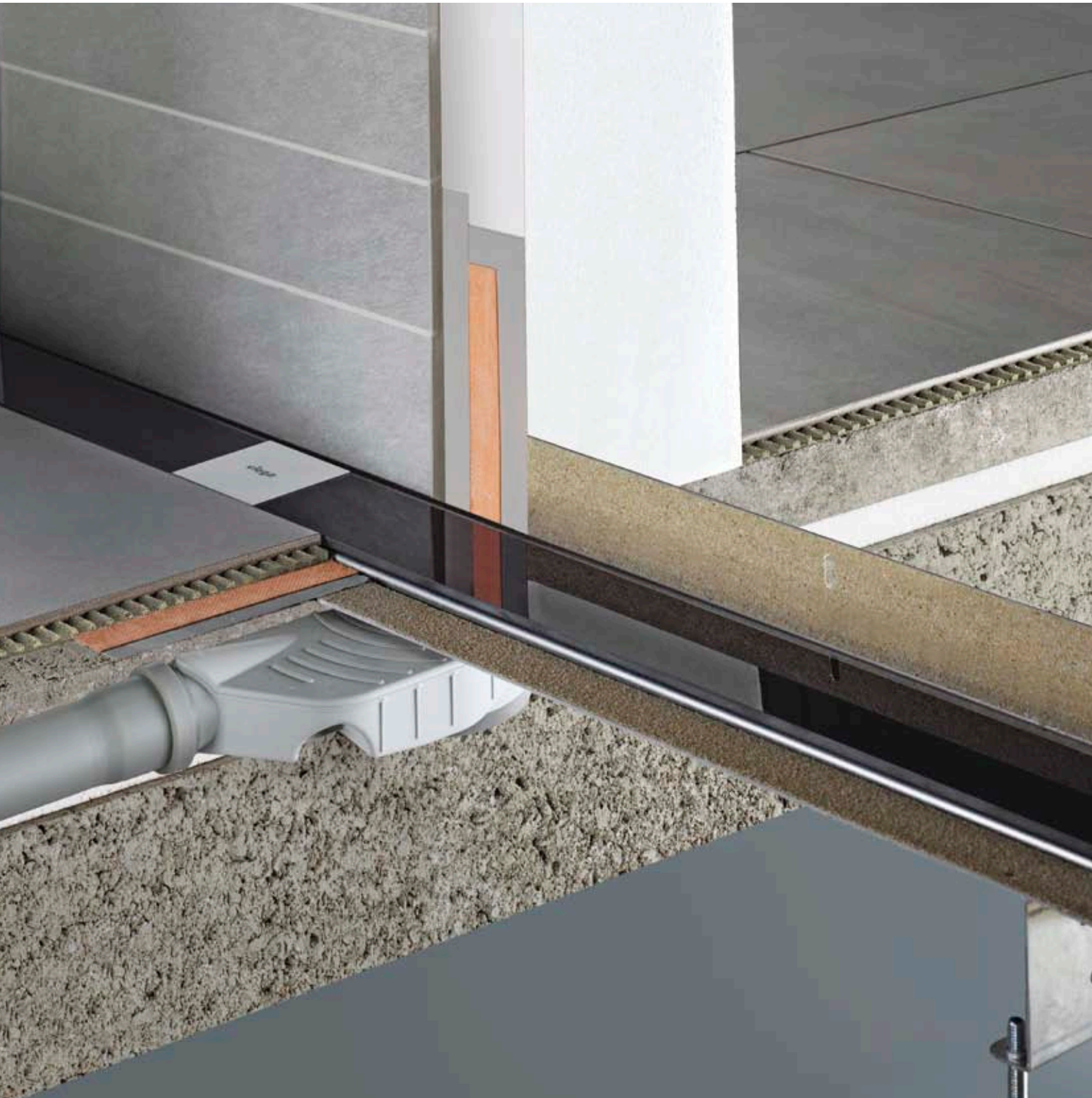
In the normal operating condition, the water seal level is 35, 40 or 50 mm.

If there is underpressure in the system, only a fraction of the sealing water is removed along with the air required due to the retaining pockets.

Therefore, there is always enough water in the drain to act as an odour trap.



Advantix Shower Channels with Advantix Top: Bonded Sealing Technology.



Viega shower channels

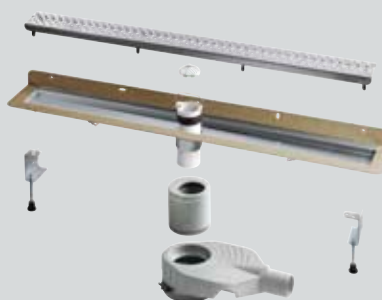
Viega Advantix shower channels are available in two variations: with adjustable stainless steel grate frames and as a frameless basic variation. Both are height-adjustable and can be combined with all Visign grates for Advantix shower channels. Their maximum drainage capacity is 1.0 l/s, the seal water head is 35, 40 or 50 mm.

Advantix shower channel

The framed variation of the Advantix shower channels connects design demands with increased assembly comfort. The stainless steel frame is laterally adjustable and via distance pieces also height-adjustable. It also allows exact alignment in the tile pattern. Adjustable feet and sealing accessories can be ordered separately if required.

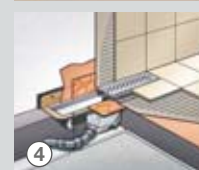
Advantix Basic shower channel

The economical frameless basic variation of the Advantix shower channels emphasizes the used Visign grate, which fits in perfectly with the tile pattern. The sand coated flange provides optimal grip for all common sealing materials. Sealing accessories can be ordered separately.



Floor mounting Advantix shower channel

- 1 Adjust the shower channel with help of the continuously adjustable screw feet.
- 2 Insert the shower channel into the bonded sealant with the sealing accessories.
- 3 Adjust the height-adjusted grate frame from the middle by up to 5 mm. Then tile up to the frame.
- 4 The perfect result: the Advantix shower channel with Visign grate.



Wall mounting Advantix Basic shower channel

- 1 Adjust the shower channel with help of the continuously adjustable screw feet.
- 2 Application of the Schlüter-Kerdi sealing tape in the liquid bonding sealant.
- 3 Tiling with or without floor covering edging rails up to the edge of the EPS hard foam block.
- 4 The perfect result: the frameless Advantix Basic shower channel with Visign grate. Exactly built in a few steps.

Advantix Bathroom and Floor Drains: Bonded Sealing Technology.

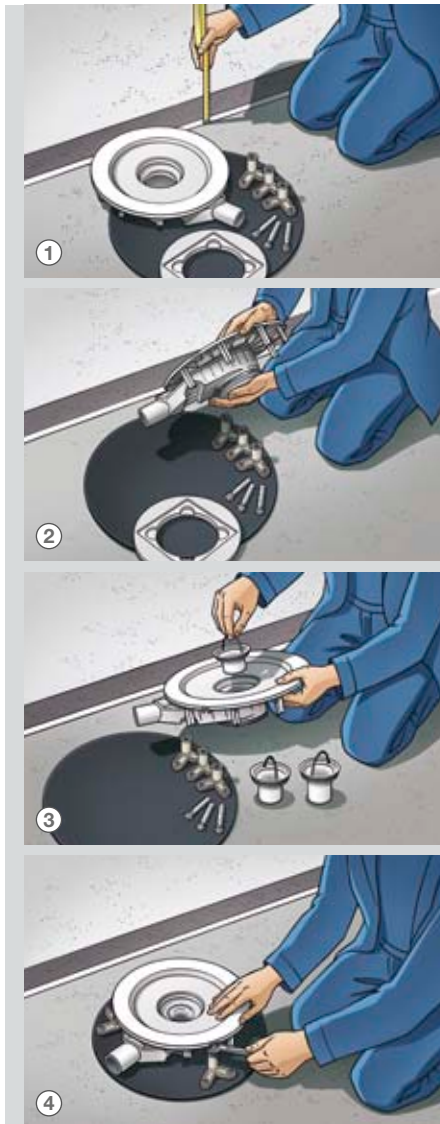


Double reliability during fitting

Because when sealing the main concern is the safe transition between the drainage area and floor screed, Viega counts on double reliability. Firstly, the special fitting of the flange anchors the drain securely into the floor screed. Secondly, the sealant collar provided with the fitting makes the transitional zone more secure. It is fitted directly into the liquid seal by the tiler.

Various Advantix add-on elements

Viega offers the right solution for many areas of use. For commercial areas with high load strain or for outside, for example, add-on elements made of polymer concrete with cast steel grates and additional fibreglass matting, which are particularly stable and secure. Add-on elements or entire drains made of plastic with their flat structure are meant for installation in floor constructions in private housing, whilst the ultra-flat drains are intended for use in refurbishments with low floor heights.



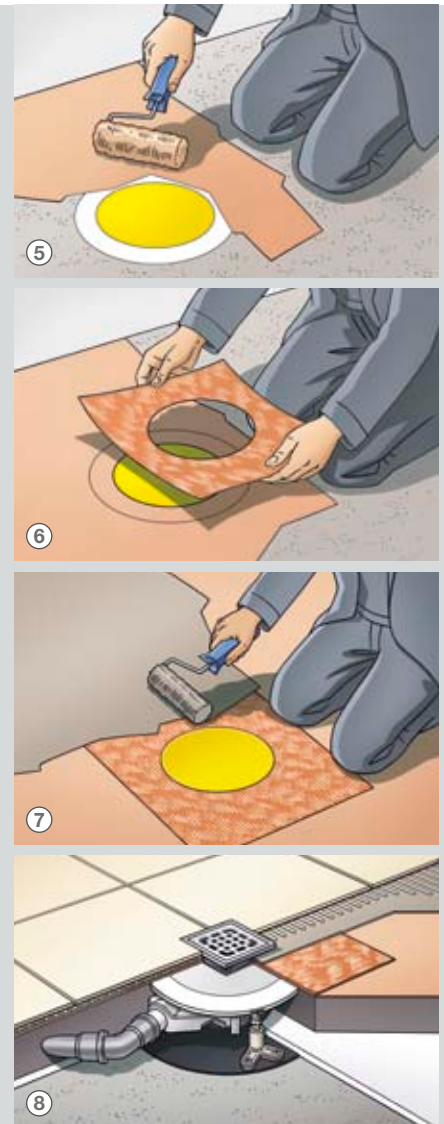
Installation in bonded sealing technology. Example: Advantix Top

1 Measure the floor construction height, here: 85 mm.

2 Adjust the height-adjustable floor of the Advantix Top to the site conditions.

3 Choose one of the three immersion pipes included in the scope of delivery, here: the shortest model is used.

4 Position the drain and sound insulation and adjust it with millimetre precision using the height-adjustable mounting feet.



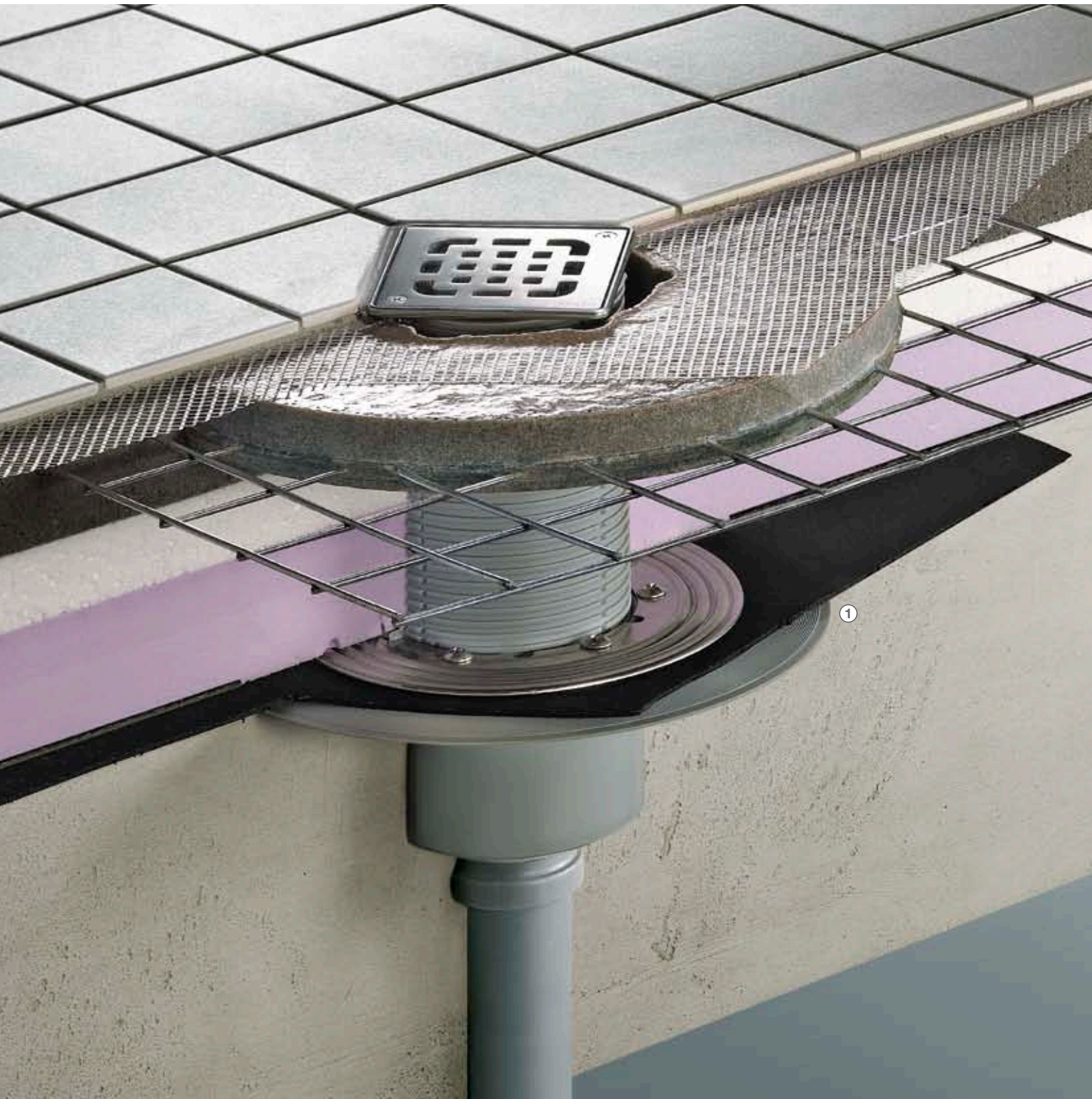
5 Application of the first layer of liquid foil.

6 Working in the Schlüter-Kerdi sealing collar into the liquid foil.

7 Application of the second layer of liquid foil.

8 The perfect result: the Advantix Top floor drain with a construction height of only 85 mm fitted in only a few steps.

Advantix Bathroom and Floor Drains: Conventional Sealing.



Areas of application for conventional sealing

Even with so-called conventional technology, building components such as ceilings, floors and even insulation can be permanently protected from moisture. The sealant channels made of bitumen or EPDM used for this procedure are applied directly to the unfinished concrete or thermal insulation. This technique has proven itself particularly in the sealing procedure for balconies, terraces, floor panels and cellar floors. In addition, conventional sealant channels can also be used as an additional second sealant level in a sealing procedure carried out with bonded waterproofing technology.

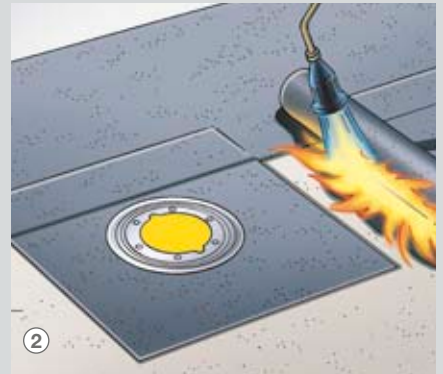
Processing variations

Viega drains can be incorporated with a clamping ring and a sealing collar either in bitumen or EPDM channels – without risk of damaging the drainage structure during welding or adhesive work. The fully developed technology of the Viega components guarantees safe transition between drain and sealing channel – irrespective of which processing variation is used.

Installation of the drain before the laying of the surface seal



1 The dual-sided sealing collar (bitumen side up, EPDM side downwards) is placed over the drain and is tightly secured using the flange ring.



2 The Bitumen side of the sealing collar is facing upwards. The following sealing channel is welded to the collar using an open flame on the whole surface.

Installation of the drain after the laying of the surface seal



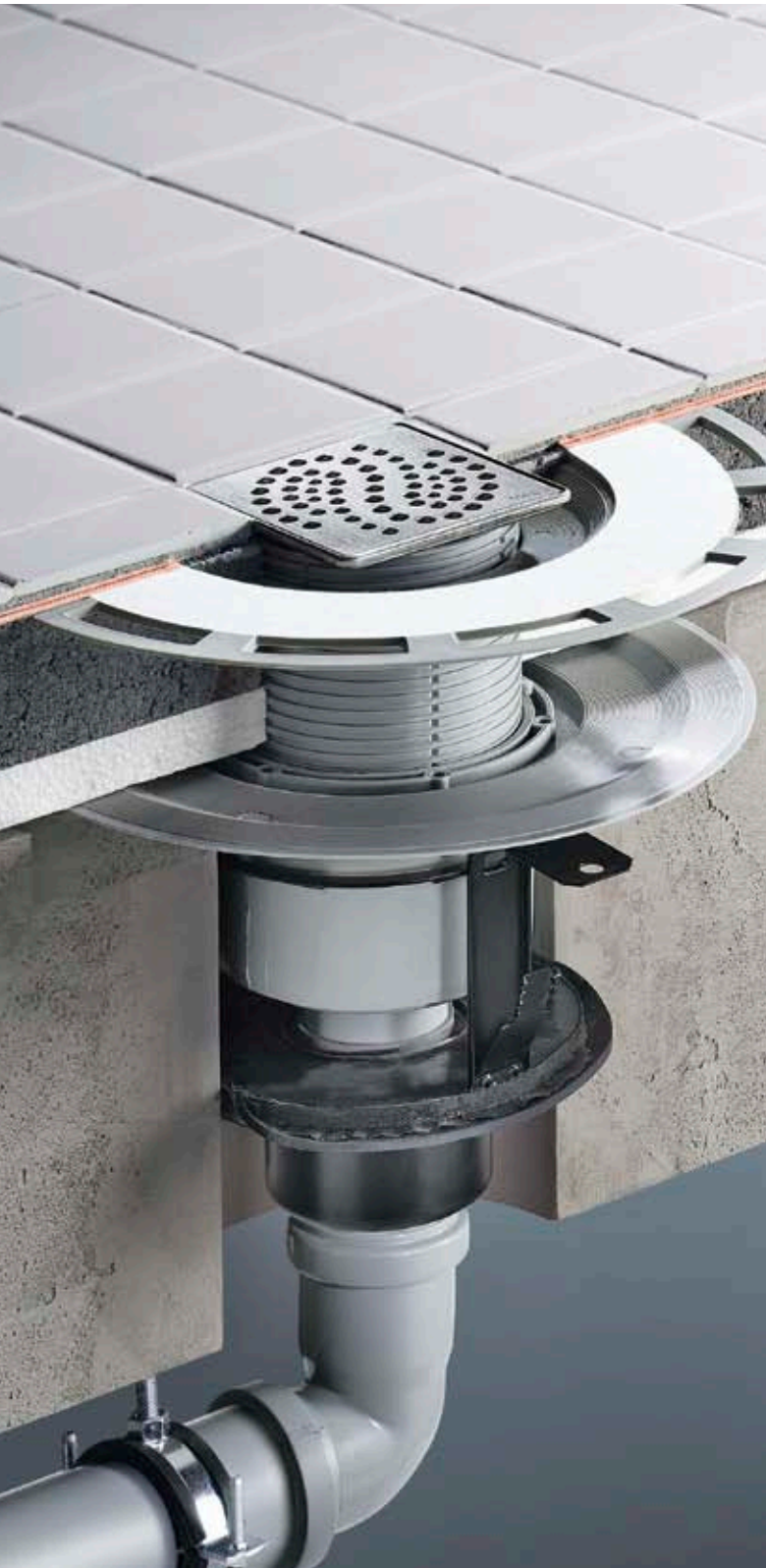
1 The dual-sided sealing collar (bitumen side up, EPDM side downwards) is placed over the drain and is tightly secured using the flange ring.



2 The EPDM side of the sealing collar is facing upwards. The collar is welded to the pre-laid sealing channel using hot air.

1 Conventional sealing – as described in the assembly steps on the right.

Advantix Bathroom and Floor Drains: Fire Protection, Sound Insulation.



Fire protection technology by Viega

Viega Advantix fire protection products R 120 are designed using state-of-the-art technology with a tested fire resistance of up to 120 minutes in order to prevent fire and smoke from spreading through the ceiling. In the case of a fire, a conventional drain made of plastic will melt within just a few minutes and then there is an open connection between two storeys. For this reason, Advantix fire protection products have an integrated fire protection element. This element has an intumescent mass which completely swells up at temperatures above 150 °C and completely seals off the free profiles in the area of the ceiling duct.

Special solution by Viega: the R 120 pipe duct (Fig. 1)

For fire-proof ceiling lead-in of shower tray drains or horizontal bath or floor drains, Viega offers a special solution: the R 120 pipe lead-in. This makes it possible to install a horizontal drain at a later point in time. So it can be positioned exactly under the shower or in the tiling pattern.

Sound insulation from Viega

Floor drains take a subordinate noise technical function because the water only has a short drop into the casing and settles in the odour trap. However, as part of the drainage system, they are subject to the conditions of DIN 4109/A1 and as horizontal floor drains should always be installed directly on footfall insulation or in the case of installation in rough concrete be acoustically decoupled via a 2 to 3 mm thick mineral fibre layer. The Fraunhofer Institute for Building Physics confirms the use in rooms requiring protection in accordance with DIN 4109 and VDI 4100 for many Advantix floor drains and shower trays.

The functioning of the fire protection drain



After 4 minutes, approx. 460 °C: the plastic pipe becomes malleable.



After 8 minutes, approx. 625 °C: the pipe is melted; the swelling mass fills the entire borehole.



After 25 minutes, approx. 800 °C: borehole and connection are completely sealed. The water trap remains largely in tact.

In-pipe technology

The fire protection drain and the pipe lead-in can also be fitted using in-pipe technology. To do this, a PP or PVC pipe is cast during cutout, in which the drain is later inserted – like a borehole. In the case of a fire, the swelling mass also fills out the slit which develops as a result of the melting pipe.

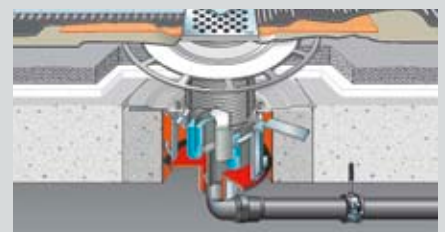
Uncomplicated, building site-friendly assembly



1 The installation of the fire protection drain R 120 is completed in a few steps. After boring, a second borehole is created – approx. 20 mm deep in the ceiling. The concrete edge is chipped off.

2 Then apply mortar to the chipped ring and insert the pre-assembled fire protection drain.

3 The flange must be flush to the ceiling. The spring fastener fixes the component. Then, fill the assembled drain with water and attach the protective cover. Finished!





Advantix Bathroom Drains for Smaller/Medium Drainage Capacity.

Excerpt from the complete range



4960.30 4971.10 4971.20 4971.90 4971.80 4965.30 4965.32 4965.33



4933.1 4928.2 4928.4 4976.11 4976.10 4962.1 4962.3 4976.31 4976.30



4934.2 4934.5 4949.1 4962 4932.2 4936.6 4944.8 4946.3 4945.1-356



4914.21 4927 4939 4980.61 4925 4924 4947.1 4948.21 4948.31



4965.10 4960.80 4980.10 4980.30 4926 4936.3 4926.5 4943.2 4944.2



4935.1 4936.2 4935.6 4914.10 4927.3 4937 4926.20 4923.5

The products shown on these two pages are only a small part of the comprehensive Advantix range.



Advantix Bathroom Drains for Higher Drainage Capacity.

Excerpt from the complete range



4933.4

4933.2

4933.6

4933.61



4929.1



4929.3



4976.21



4976.20



4963.4



4976.41



4976.40



4922.5



4922.6



4922.7



4933.7



4933.71



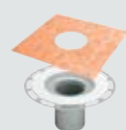
4949.3



4963

1

Upper parts
and grates



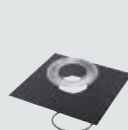
4994



4954



4996.1



4998.3



4996



4954.8

2

Add-on elements
and seals



4951.1



4951.15



4955.1



4955.25



4955.15

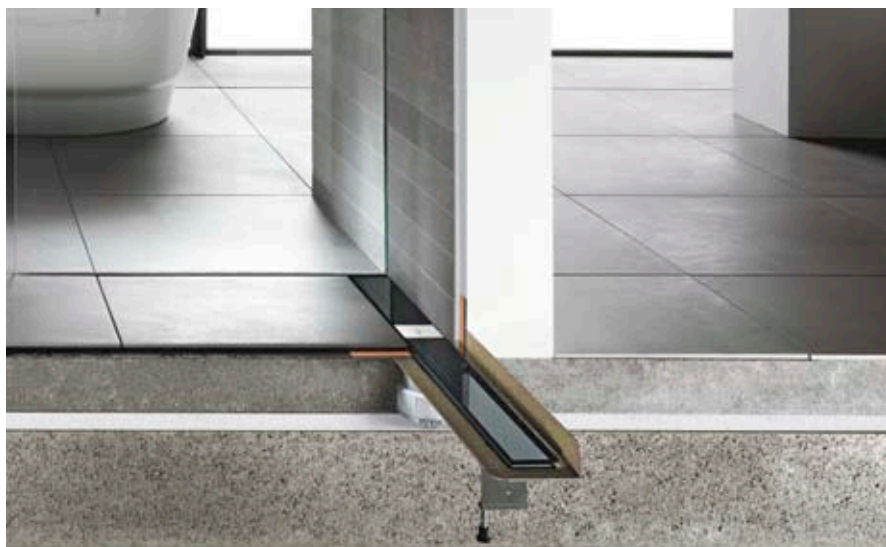


4951.20

3

Base units

Advantix in the Bathroom.



Barrier-free bathrooms and floor-level showers demand an efficient drainage system. Advantix bathroom drains with a drainage capacity of up to 1.1 l/s for the flow of small to medium-sized water amounts are an outstanding choice here.

Advantix shower channels

Advantix shower channels from Viega are the perfect choice for floor-level showers. They can be placed anywhere in the room or against the wall – each available as flexible framed versions or as the frameless basic model.

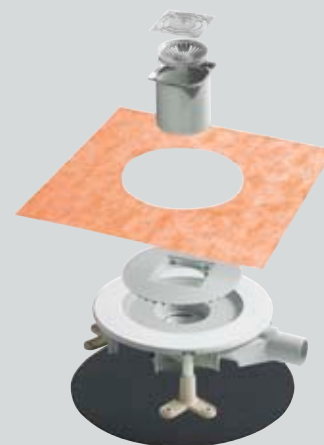
New! Advantix Vario shower channel

It represents the unique combination of award-winning design, simple assembly and optimised warehousing. With a drainage capacity of up to 0.8 l/s, it also guarantees hygienically flawless drainage. The scope of delivery comprises a channel base unit 1200 mm long including saw guide, assembly and sealing accessories. A stainless steel standing grate with matching protective caps, optionally matt or shiny, rounds off the complete package.



Advantix bathroom drain makes it possible

The vertical base plate makes it possible for the bathroom drain to penetrate the ceiling. The tileable fixture offers a maximum of design freedom by allowing the use of all floor coverings, such as tiles, natural stone and glass mosaics.



Advantix Top for high drainage capacity

The most efficient and economic solution for flush-to-floor showers is offered by the Advantix Top in this design for a composite seal with drainage capacities of up to 1.2 l/s.



Advantix corner channel

The drain can be unobtrusively positioned in the corner. Its maximum drainage capacity is up to 1.1 l/s. Further advantages: rapid, secure assembly and large selection of grate designs. It is also available in a semi-circle design.



Advantix shower channels

Advantix shower channels from Viega are the perfect decision for easy assembly. They can be positioned on the wall or free-standing in the room. The flexible frame makes it possible to subsequently adjust the sides and height to match the flooring. All the sealant accessories are included.



Advantix shower channels Basic

High-quality materials and careful workmanship provide a high degree of stability. The Advantix shower channel basic – shown here as the version for installation against the wall – is particularly cost-effective. The adjustable feet help achieve exact height alignment. Maximum drainage capacity: 1.0 l/s.



Advantix Vario shower channel

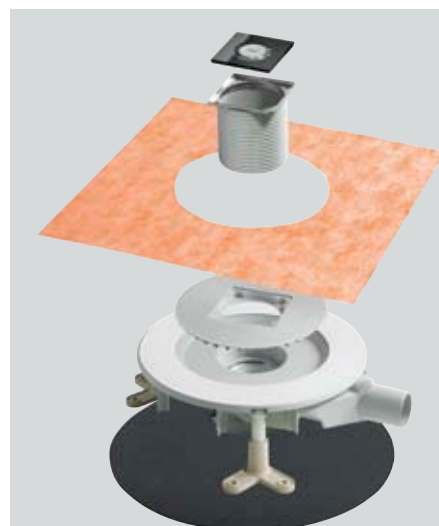
Straight designs are between 30 and 280 cm, U-shape and L-shape designs with a leg length of up to 160 cm are possible. Assembly and warehousing are easy as there is only one standard length.

Advantix for Renovation.



For a perfect refurbishment

The renovation of old buildings is responsible for almost 60% of all construction activity. The existing substance and site conditions can be especially challenging. For this reason, Viega offers special tried and tested drainage solutions. The new Advantix drains have ultra-flat construction heights of 62 to 67 mm, depending on the model. All drain solutions protect against moisture in the floor and against sewer gases.



Advantix floor drain with Viega Advantix Top for composite sealing

One that fulfils all of the requirements: with reliable assembly technology. The rubber collar included in the scope of delivery allows the sound insulation requirements to be fulfilled. The maximum drainage capacity is 1.1 l/s.



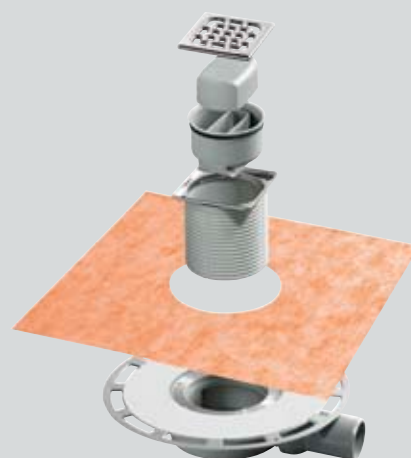
The Viega Advantix Vario shower channel for refurbishment

With all the advantages of the Vario shower channel. Can be shortened to lengths of between 300 and 1200 mm. Can be extended using Vario connection pieces and Vario end pieces. Drainage capacity 0.6 l/s: can be increased with various installation methods and extensions.



The Viega Advantix shower channel Basic 67 mm for refurbishments

There are five lengths available for installation against the wall or in the room. Drainage capacity: 0.45 l/s can be increased with various installation methods.



Advantix bathroom drain with integrated odour trap

Ultra-flat drain combination with integrated odour trap. It prevents unpleasant odours in the bathroom and can be retro-fitted. Maximum drainage capacity: 0.4 l/s.

Advantix on the Terrace.



Good Outlook for Poor Weather: Viega Advantix on the Terrace.

Irrespective of whether the balcony or terrace is tiled, has a gravel bed or support legs – Viega offers the right drainage technology for any type; if required, even with a second sealant level. Advantix drains have been developed for large amounts of precipitation and have norm-conforming and highly-resilient grates. It is possible to retro-fit the drains with an odour trap without water seal.

The extensive Advantix programme by Viega also includes drains which are suitable for unused flat roofs and terrace areas. They have an overhead gravel and foliage catcher.



For terraces and balconies with 2nd drainage Level

The inlet element takes the water below the floor. The drainage capacity is 2.5 l/s; a combination with different add-on elements and attachments is possible.



Advantix floor drain: complete solution for balconies and terraces

With this basic design, the seal is either applied conventionally or using a stacking element in the composite seal. Sealant accessories, such as the bitumen sealing cuff, are also available.



Advantix insert drain: quick and odour proof installation

This version of the insert drain with frost proof odour trap is suitable for unsealed floor constructions in terraces and outside areas. With the multiple lip seal, the drain is able to be pushed into an existing pipe end. Maximum drainage capacity: 0.7 l/s.



Advantix rainwater drain

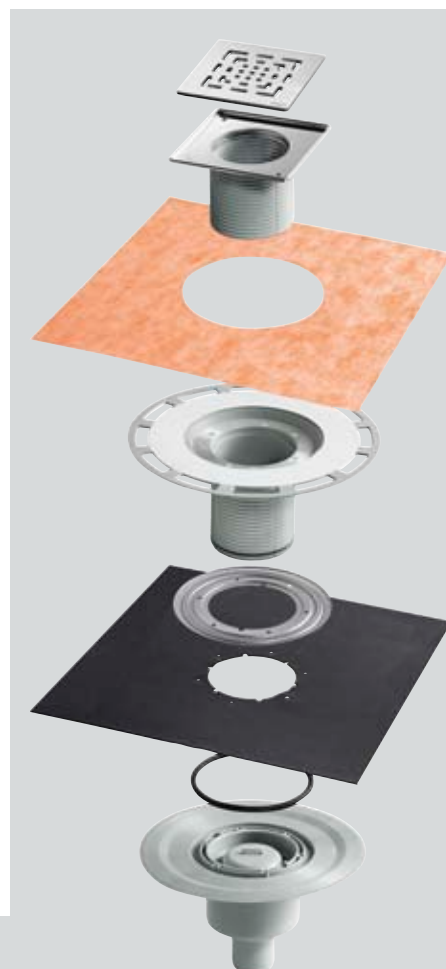
When pipes for rain end in front of roof windows, this drain offers the ideal solution: equipped with odour trap and foliage trap, it has a maximum drainage capacity of 6 l/s. It is available in DN 100 and is fitted between the downpipe and the gutter.

Advantix for the Cellar.



The basis of any good drainage system

In work rooms, utility rooms and cellars, water often only occurs temporarily and in small amounts. High drainage capacities are normally not required. Depending on the use, additional seals can be avoided. However, Viega still maintains the same high standard of quality – among other things by equipping the complete drains with an integrated odour trap as well as the option of retro-fitting floor drains with an odour trap.



Advantix bathroom drain: solution for the cellar bathroom

The vertical basic unit can be attached to the bitumen sealing lane using a clamping flange. The add-on element ensures the secure installation in the bonded seal.



Advantix floor drain: the complete drain

This drain can deal with up to 0.9 l/s of water and can be installed in or on the concrete slab. The seal is made using conventional technology or can be sealed in combination with an add-on element using a liquid seal.



Advantix floor drain: installation in the concrete floor without seal

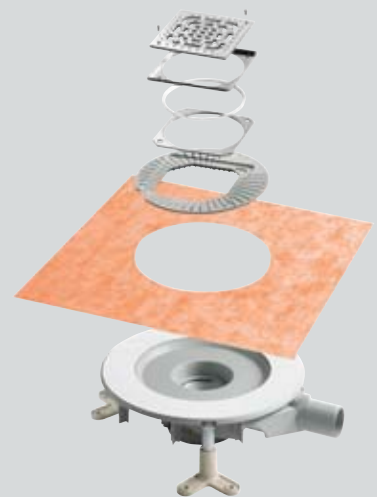
The so-called "Cellar Master" is installed directly into the floor. Its distinguishing marks include the removable dirt trap as well as the height-adjustable, rotatable plastic grate.

Advantix in the Public Domain.



Preventing security being flushed away

In public buildings such as swimming pools, shower units or sanitary rooms with a lot of foot traffic, larger amounts of water have to be dealt with over longer periods. It is also important that the grates prevent slipping, secure against vandalism and able to take heavy loads. In brief: Everything that Viega offers is required here – quality, safety, security and reliability.



Advantix Top floor drain: especially secure

For places with a lot of foot traffic: stable support feet as well as a base unit with maximum drainage capacity, combined with a slip-retardant grate. The sealing flange with additional sealing collar ensures a secure connection in the liquid foil. Grate and frame can be retrofitted eccentrically on the tile pattern.



Advantix corner:

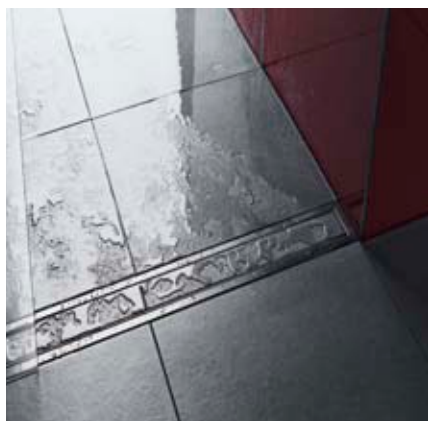
positioning outwith the walking area
Straight or semi-circle, maximum drainage capacity: 1.1 l/s. Scope of delivery: laterally and vertically adjustable grate frames, stable support feet, a practical hair trap and sealing accessories.



Advantix floor drain:

maximum fire protection
Viega fire protection floor drains R 120 fulfil the fire protection requirements for ceiling lead-ins and can be combined with all add-on elements and attachments. Drainage capacity up to 1.6 l/s.

Visign Grates for Advantix Shower Channels.

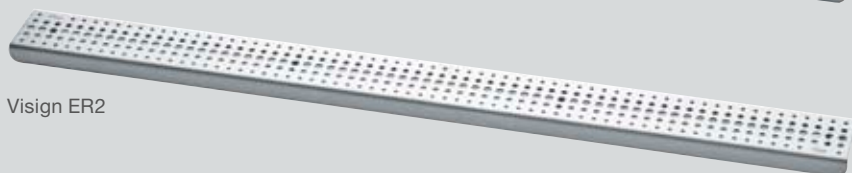


Convincing design

No matter whether it's a design jury, builder or specialist tradesman – Visign grates for Advantix shower channels will convince everybody. With original design, high-quality materials and intelligent technology, they offer excellent quality in every sense. They are made of stainless steel and can be combined with many other materials, e.g. glass or individual floor coverings such as tiles or natural stone. The grates are equipped with rubber cushioned adjusting screws. This means that annoying step and metal noises are almost completely prevented. And, naturally, the Visign grates can be combined with the Advantix shower channels as well as with the frameless Advantix Basic shower channels.



Visign ER1



Visign ER2



Visign ER3



Visign ER4*



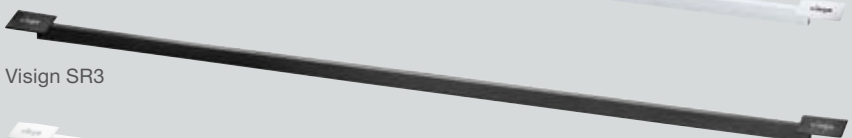
Visign ER9



Visign SR1



Visign SR2



Visign SR3



Visign SR4

* individually adaptable tile insert.

Visign Grates for Advantix Bathroom, Floor and Corner Drains.



Visign grates

Square grates for straight architecture, round forms for bathrooms with curved contours, corner drains in straight and round designs, as well as a huge variety of materials and perforations. With the high-quality Visign grates by Viega made of stainless steel or in combination with glass, individual design freedom knows hardly any limits.



Visign RS11



Visign RS2



Visign RS14



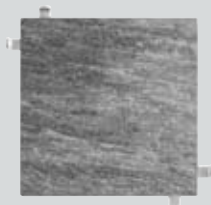
Visign RS4



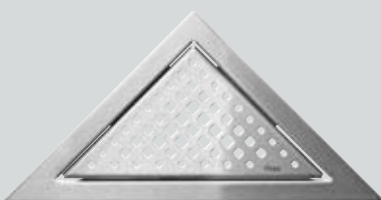
Visign RS15



Visign RS5



Advantix support
Tileable



Visign EA1



Visign EA11

Viega GmbH & Co. KG

Plumbing and heating systems
Viega Platz 1
DE-57439 Attendorn
Germany

Phone +49 2722 61-1297
Fax +49 2722 61-1146

info@viega.com
www.viega.com

